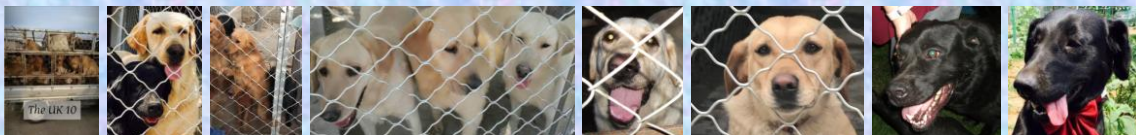




Happy New Year and welcome to our first Newsletter of 2024. Thank you to everyone (and your dogs) that sent us good Christmas wishes and some lovely updates and photos. We have had a very busy start to the New Year with many beautiful Labradors sadly being handed in for rehoming. We of course are working hard to find them all loving new homes.

Don't forget to follow us on Facebook: [www.facebook.com/LRRSE](http://www.facebook.com/LRRSE)



## China Dog Update



Fergus



Daisy

All of our China dogs continue to do well, and plans are being made to hopefully have two new arrivals at the beginning of February. If you'd like to donate to us to help cover their travel costs to their new lives, please [Click here for PayPal](#) or [here for JustGiving](#). Please tick for gift aid if you are a UK taxpayer, as we get 25% on top of your donation.

We're delighted to report that Trevor has been successfully adopted (see pg2 for a full report!) and that both Daisy & Fergus are enjoying being fostered in the UK, gradually chilling out and learning new skills.



## ***Fostering a dog isn't a lifetime commitment.***

*It's a commitment to saving a LIFE.*

*We urgently need people that could join our small team of fosterers.*

*If YOU would like to help, then please contact us*

**PLEASE GET IN TOUCH WITH US IF YOU FEEL THAT YOU COULD OFFER A STARTING PLACE FOR ONE OF THESE VERY SPECIAL SOULS.**

[LOUISE.LRRSE@gmail.com](mailto:LOUISE.LRRSE@gmail.com) Or [SUE.LRRSE@gmail.com](mailto:SUE.LRRSE@gmail.com)

*If you are able to help by donating or joining our fundraising page or by simply sharing our posts, we would be very grateful.*

Visit our donate page <https://www.labrador-rescue.org.uk/donate.html> for many simple ways to donate.

Thank you

# TREVOR



Good Morning Sue,

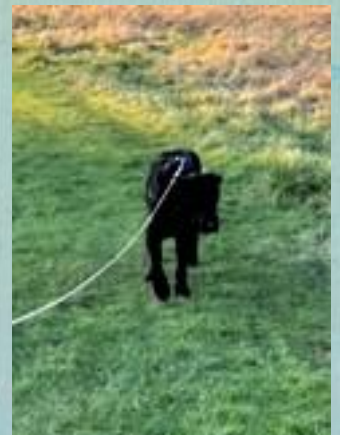
Many thanks for your help yesterday with Trevor. We had a good trip back. Trevor decided he did not like being in back of the car and sat with Pauline on the rear seat. I suppose that was one of his first trips in car, so will get a secure harness for future trips. He has settled in quite well. He knocks the conservatory door to go out and has done all his jobs outside in the garden.

Took Trevor out for walk yesterday afternoon over to the golf course. It went well although found that a couple of times he would stop, but after a treat would carry on.

Last night he was quite restless. He slept for couple hours. Again, it was his first night, so hope he will improve.

Many thanks and we will keep you updated ref Trevor. Once again thank you for your help finding Trevor

Kind regards,  
Gerald and Pauline



# AUTUMN



Merry Christmas Sue!

Autumn is settling in well and has loved her new beds, toys, walks and socialising with other dogs and humans.

We have made three doggie friends already, including my mum's dog! We have been visiting secure tennis courts to practice recall off the lead and to stretch her legs!

Thank you again, we couldn't imagine life without her.  
Have a magical Christmas.

Best wishes Laura, Aaron & Autumn 🐾 🐾

**LILICO**  **ATTLEE**  
**COUNTRY STORES**  
PET • EQUESTRIAN • FARM

## Attlee's Country Store Dorking

-  01306 884289 or 01306 883533
-  Parsonage Mill, Station Road, Dorking, Surrey, RH4 1EL
-  Monday to Saturday 8:30 - 5:00pm  
Sunday 10:00am - 4:00pm



This is a lovely store with exceptionally nice staff and well worth a visit...with your dog of course!

# HERBIE



Herbie update - full groom and hair now looking level.

Very happy boy who knows how to sit on command, he knows his name when called, knows "find it" for treats, and has recall via whistle.

Doing very well for an old boy 🐾



"Does the rolled-up ham come without the dewormer pill?"



# BARNEY



Hi Sue,  
Barney at his best - muddy face! So, you can guess what the rest of him looked like?

Thankfully, we did have a stream to clean him off.

Hope you have a lovely Christmas & wishing you health & happy times for 2024, from us all ? ? ?



Hi Sue,  
Hope you are well & also had a nice few days over Christmas. Here is Barney on the beach. He was not sure of the waves coming up the beach due to the high winds. Usually, it is very calm. But in the end, he enjoyed it.  
All the best to you ?

Please don't forget to carefully return our tag once you have your own made. Our stock frequently runs low, and they are quite expensive for us to replace.



Thank you!



# BELLE (prev. Connie)



Morning Sue,

Belle has settled in wonderfully.  
Don't know what I'd do without her now!  
Love her to bits.

Kind regards,  
Clare



## STAR BOARDING KENNELS

The facilities and staff are excellent, and the immediate care and compassion given to the dogs we have placed with them has been wonderful.

If you are looking for holiday care for your dog or cat, then we thoroughly recommend the STAR BOARDING KENNELS

Wide View, Green Lane, Chessington,  
Surrey, KT9 2DS. Tel: 020 3124 1622

Email: [info@starboardingkennels.co.uk](mailto:info@starboardingkennels.co.uk)

Visit their website:

[www.star-boarding-kennels.co.uk](http://www.star-boarding-kennels.co.uk)

When you find something you like so you get it in every color...



# FAYE



Happy 14th Birthday to Faye



## HOW TO WALK A HUMAN A Dog's Guide

Humans need exercise. If they don't get it, they get out of shape.  
It's up to you to save them.

1. Allow your Human to tether themselves to you.  
This keeps them from wandering off or running away.
2. Your Human will probably need breaks.  
Be considerate and stop and sniff often.
3. Bark frequently. Humans have short attention spans.
4. When you go to the bathroom, walk away.  
If you have trained your Human correctly, they will pick it up. It is good aerobics.
5. Periodically drag your Human as fast as you can.  
This is called *Interval Training*.
6. Do not allow your Human to shorten the walk. They are being lazy.  
Sit in protest if you must.
7. Once you return home, allow your Human to remove their tether, then lick their face many times.  
This is positive reinforcement of a job well done



# DEXTER



Merry Christmas from Dexter



The donations we received from Pets at home buy food – treats – bedding – toys etc for our rescue dogs. Please join their VIP club and make sure you choose Labrador Retriever Rescue Southern England as your chosen charity...details on how to do this are below...this won't cost you anything and will really help another rescued dog.

## *Pets at Home*

By joining their VIP club and choosing us as your chosen charity, every time you make a purchase in their store a donation is made to us. Over the past months we have been able to purchase dog food, bedding, treats and toys for the dogs in kennels and in foster with the vouchers we are sent from this brilliant scheme. So, please sign up today and help us, help more beautiful dogs.

use the VIP club app for all things Lifelines

VIP exclusive

Do you have our app? Download today! It's the easiest way to get the most out of the VIP club, including:

- Quick access to your VIP club card





# OZZIE



Happy Christmas from  
Ozzie in Spain.  
(He had a lovely birthday  
too!)



## FUND-RAISING AUCTIONS

The New Year is off with a bang - of the gavel!  
Our January auction has already kicked off,  
with some fantastic bargains to be had.

So, hurry on over to our LRRSE Fundraising  
group on FaceBook to place your bids

[https://m.facebook.com/groups/3924874049  
17165/?ref=share](https://m.facebook.com/groups/392487404917165/?ref=share)



# POPPY (prev Jasmine)



Hi Sue,

Poppy having a snuggle with Scrumpy.  
She's completely confident round the garden now.

Even did some zoomies.

Getting used to our routine and only occasionally freezing briefly on walks.

She's still not quite sure about steps so it's lucky we have Jake's ramp!

Dawn





# Please Remember Us In Your Will

Charity No 1105955

Including us in your Will is an incredible way of remembering the dogs that have given you so much love and pleasure during your life and continuing to help many other dogs in the future.

We will also care for your dog/s should the need ever arise and writing your wishes into your Will, will ensure that your pet/s continue to be loved and cherished for the rest of their lives.

LRRSE does not have any paid workers, so every penny we receive is spent on saving another dog.

We are only able to carry on our work by receiving donations and legacies. Please remember LRRSE in your Will.

## Made Your Will Yet?

**You have probably worked all your life for everything you own**

**Without a Will** government rules decide who inherits it all

*The impact of Care Fees, Tax and other issues could also reduce your loved one's inheritance*

**With the "Right" Will and good planning you CAN help ensure as much as possible goes to your chosen loved ones...not to 'unintended' others**

I am pleased to offer  
**A FREE Basic Will** \*limited time introductory offer  
to the readers of this newsletter

**Specialists in Wills Trusts LPAs Probate**

\*\* We donate 10% of charged Will and LPA fees to the LRRSE Charity

For an appointment  
Personalised advice  
Or more information

Call **07538 739 117**

[barry.halliday@secureinheritance.co.uk](mailto:barry.halliday@secureinheritance.co.uk)



**Barry Halliday**  
LLB (Hons) Aff SWW



**Secure Inheritance**  
Legal Services

Wills Trusts and Lifetime Planning  
Helping Protect Your Family's Inheritance



## Hey...What About Me?



*"I would really miss you... but what do you want to happen to me?"*

**With the "Right" Will you can name who you want to "inherit" your pets.**

Plus, if you wish, you can also leave a financial provision in your Will for your pet together with your requests about their care.



**Just contact Barry Halliday and tell him what you want for your beloved pets.**